

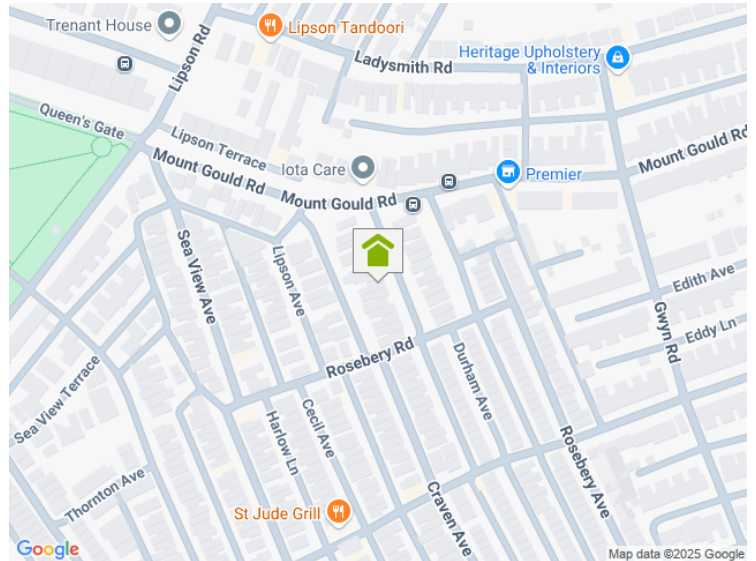
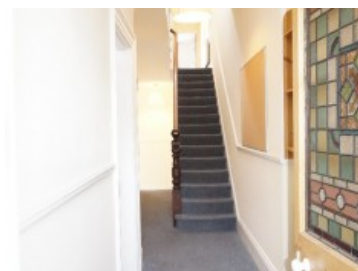


**A HOME AFTER HOME**<sup>LTD</sup>  
SALES & LETTING

## Channel View Terrace, PL4 8SH

5 Bedroom House Share

FROM  
**£85.00**  
PPPW



Beautifully presented terraced property has recently been refurbished to include a new bathroom and new open plan kitchen and communal area and provided with new furniture throughout. there are 5 large double bedrooms offered either to a group of professional friends or individuals.

the property is situated in a quite residential area a short distance from the city centre and Mutely Plain and comprises of.

Bedroom 1, Ground floor, very large bedroom with featured fire place and bay fronted window  
bedroom 2 , second room on the left of the hallway, large bedroom with a window over looking rear garden

Open plan modern kitchen and communal area with cream sofas and large dining table

### Key Features

- Double Beds
- Wi-Fi
- Fitted Kitchen
- Central Heating
- Quiet house
- Recently Refurbished

[www.plymouthlettingandestateagents.co.uk](http://www.plymouthlettingandestateagents.co.uk)

A Home After Home, 11-12 Gibbon Lane, Plymouth, Devon, PL4 8BR  
contact@ahahlets.co.uk

**01752 600 485**