



A HOME AFTER HOME^{LTD}

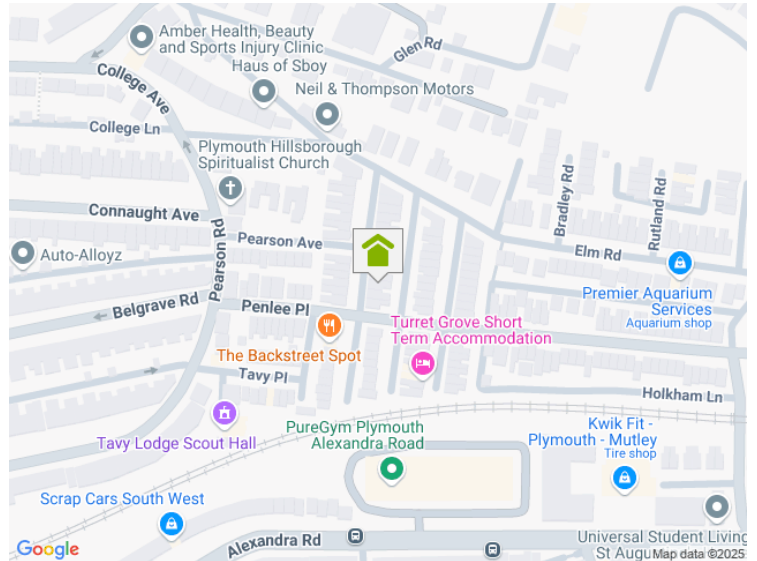
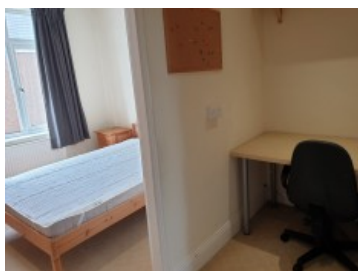
SALES & LETTING

Ivydale Road , PL4 7DF

4 Bedroom End Terraced

£220,000.00

Guide Price



A Home after Home Ltd. are pleased to market this extremely well presented 4 bedroom house situated close to mutely plain. The property is currently rented out as a HMO to students but is being offered with either vacant possession as a lovely family home or as a ongoing investment with a potential gross income of £18,172 per annum.

This spacious 4 bedroom house has been maintained to a very high standard by the owner and is arranged as follows, Ground floor; 2 large double bedrooms, Fitted Kitchen, and a fully tiled shower room and toilet, back door leads t a rear courtyard garden.

First floor, 2 double bedrooms, separate WC, Bathroom with bath and shower overhead and large living dining room at the front.

Council tax Band B, EPC RATING D62

<iframe width="560" height="315" src="

" frameborder="0" allow="accelerometer; autoplay; clipboard-write; encrypted-media; gyroscope; picture-in-picture"

www.plymouthlettingandestateagents.co.uk

A Home After Home, 11-12 Gibbon Lane, Plymouth, Devon, PL4 8BR
contact@ahahlets.co.uk

01752 600 485