



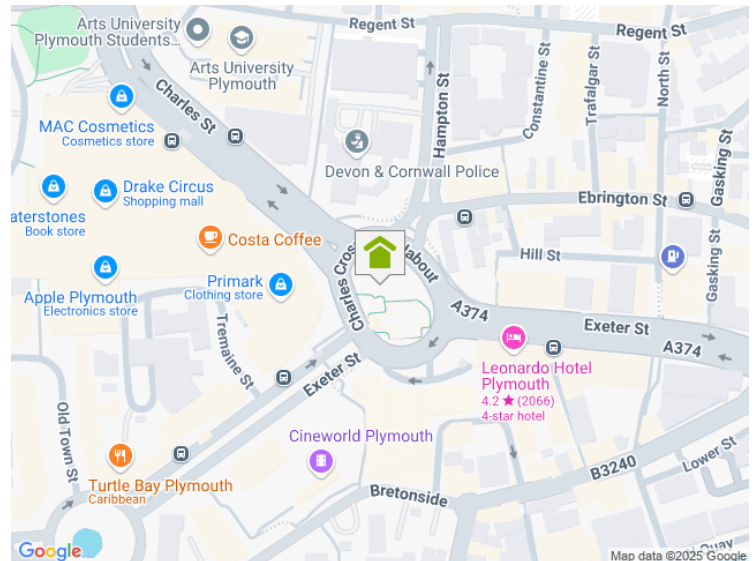
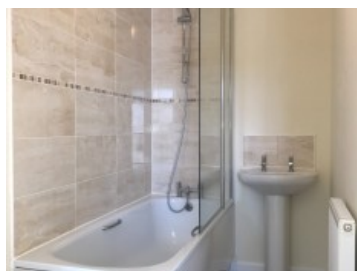
**A HOME AFTER HOME** LTD  
SALES & LETTING

Albacore Road, PL6 8DX

2 Bedroom Terraced

**£1,000.00**

pcm



Contemporary two bedroom home situated in the sought after 504K development in the north of the city, close to Derriford Hospital.

Finished to the highest standards and light and airy throughout; the property comprises of: Two well proportioned bedrooms with tiled en-suite bathroom/shower rooms, large living room, additional toilet/cloakroom at the front of property, stylish dining room and fitted kitchen at the rear with integrated oven, hob, extract and space for washing machine, fridge freeze and possible dishwasher.

Patio doors in the dinning room open out to a spacious freshly lawn'd garden, other benefits include Solar panels and double glazing which results in low energy costs and a private driveway. EPC B

### Key Features

En-suite Shower  
Fitted Kitchen  
Central Heating

[www.plymouthlettingandestateagents.co.uk](http://www.plymouthlettingandestateagents.co.uk)

A Home After Home, 11-12 Gibbon Lane, Plymouth, Devon, PL4 8BR  
contact@ahahlets.co.uk

**01752 600 485**