



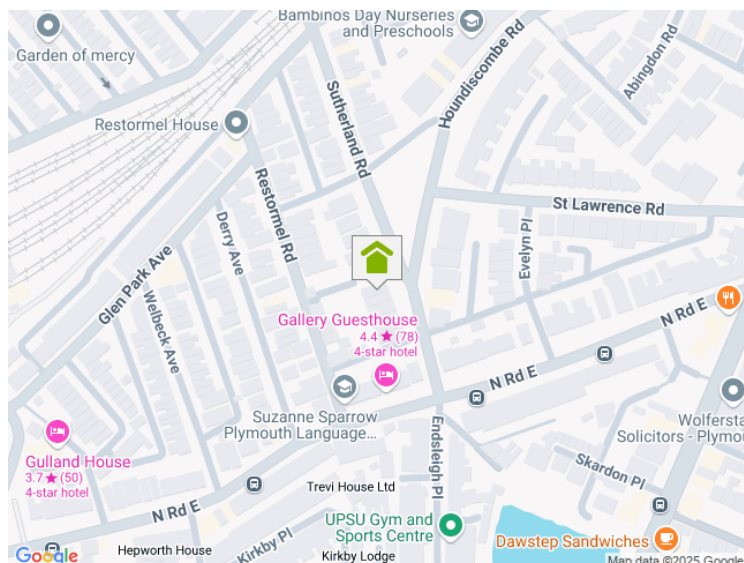
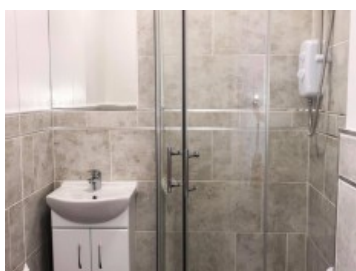
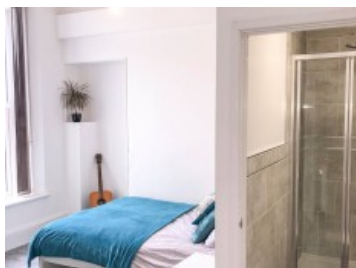
**A HOME AFTER HOME**<sup>LTD</sup>  
SALES & LETTING

**Sutherland Road, PL4 6BW**

**1 Bedroom Terraced**

**£150.00**

PPPW inc. bills



This modern and spacious twelve-bed professional house-share just a few minutes walk from Plymouth City Centre, and train station, benefits from large communal space situated on the lower ground floor of the property, with a large open plan kitchen/ dinner providing plenty of space for all housemates to cook and eat, situated just off the kitchen is a cosy lounge with a projector TV And large screen with surround sound, perfect for getting together for a movie night or watching the big game, outside is a generous size garden with a large Astro turf lawn.

Room availability

Room 1, Lgf en-suit bedroom £145pw £630pcm

Room 5, GF back en-suit bedroom £150pw, £652pcm

Room 8, FF rear tenement en-suit bedroom, £150pw £652pcm

### Key Features

- Double Beds
- En-suite Shower
- Fitted Kitchen
- Central Heating
- Double Glazed Windows

[www.plymouthlettingandestateagents.co.uk](http://www.plymouthlettingandestateagents.co.uk)

A Home After Home, 11-12 Gibbon Lane, Plymouth, Devon, PL4 8BR  
contact@ahahlets.co.uk

**01752 600 485**