

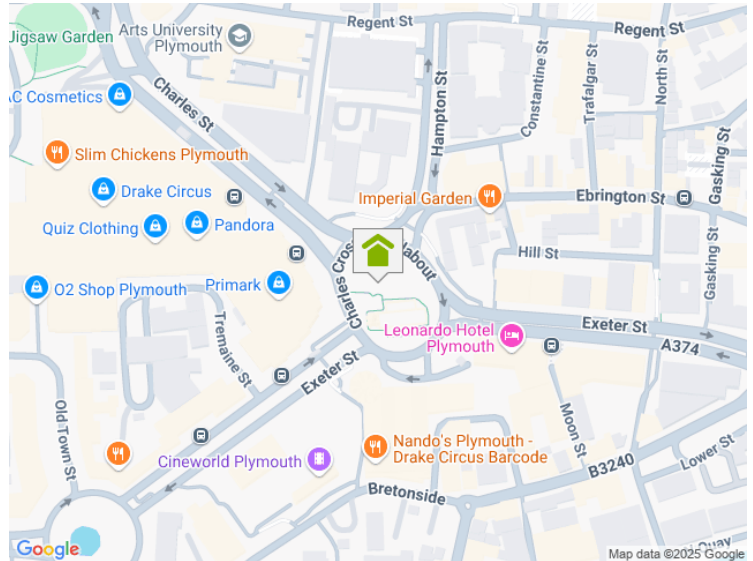
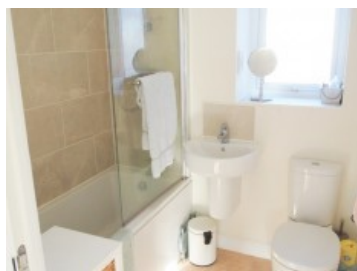
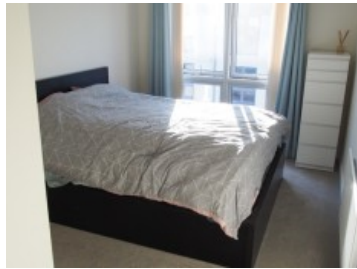


**A HOME AFTER HOME**<sup>LTD</sup>  
SALES & LETTING

Chapel Street, PL1 4TF

1 Bedroom Flat

**£130,000.00**



New to the market is this stunning top floor apartment in Devonport. 1 bedroom, 1 bathroom flat in a great location. Flat is minutes walk from Mount Wise, Devonport Park and local amenities. 114 Years remaining on lease, Ground Rent £113.50 p.a., Service Charge £524.05 for the year 24-25. Property has recently been rented out at £950pcm, offering a gross yield of 7.3% Flat with modern décor benefiting from economic bills and double glazing. This flat has a large open plan lounge opening out onto a South-East facing balcony with views over the River Tamar and Cornwall.

Apartment comprises of:

- \* Large master bedroom
- \* Spacious Lounge/Kitchen/Diner
- \* Modern High Gloss kitchen units with integrated appliances.
- \* Bathroom with modern tiles, shower over the bath, towel rail, pedestal basin and W/C.

[www.plymouthlettingandestateagents.co.uk](http://www.plymouthlettingandestateagents.co.uk)

A Home After Home, 11-12 Gibbon Lane, Plymouth, Devon, PL4 8BR  
contact@ahahlets.co.uk

**01752 600 485**