



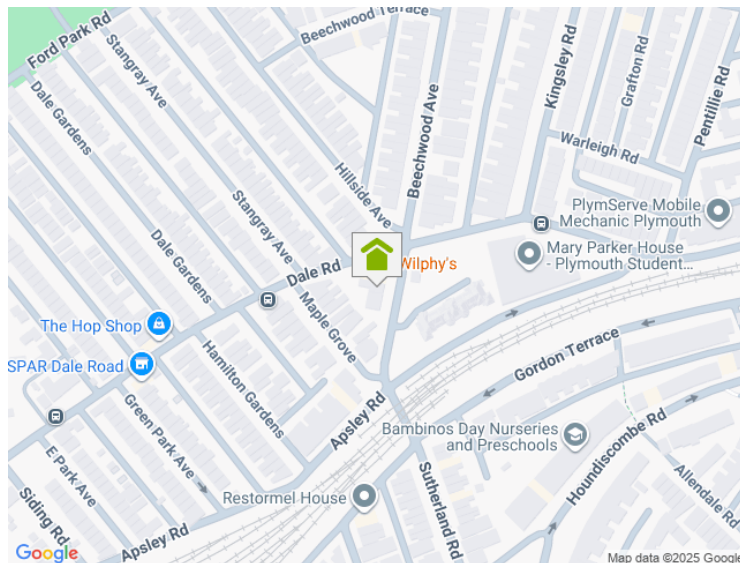
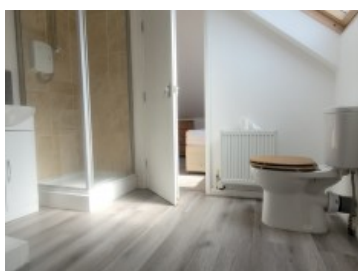
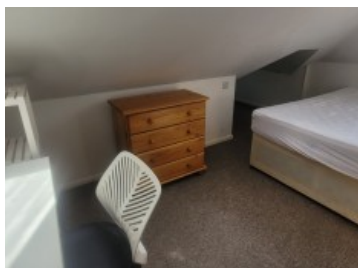
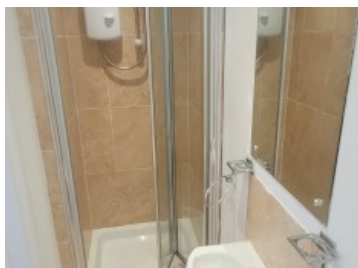
A HOME AFTER HOME^{LTD}
SALES & LETTING

Beechwood Avenue, PL4 6PN

1 Bedroom House Share

£145.00

PPPW inc. bills



Quick 2 rooms are now available in this well presented 7 bedroom all en-suite professional House-share situated in a great location within walking distance from the train-station, city centre, Mutley plain or life centre.

Spread over 4 storeys the property comprises of a large open plan kitchen living room on the lower ground floor, rear decked garden, and 7 en-suite fully furnished bedrooms over the remaining floors.

Available rooms

Room 3, £150pw located on the first floor and room 7 £145pw located on the top floor. Rent is all inclusive of all bills and including council tax

Epc d60gch, DG.No permit parking available for this property nearest carpark Napier Tc,

Key Features

- Regular Communal Cleaning
- Double Beds
- En-suite Shower
- Wi-Fi
- Fitted Kitchen
- Central Heating

www.plymouthlettingandestateagents.co.uk

A Home After Home, 11-12 Gibbon Lane, Plymouth, Devon, PL4 8BR
contact@ahahlets.co.uk

01752 600 485